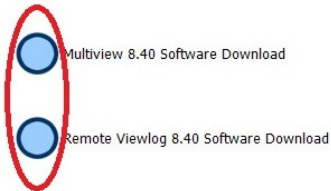


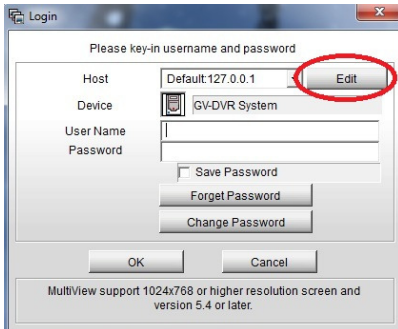
How to install Multiview

1. Go to www.tcsecurity.com/service.htm
2. Download Multiview 8.40 (or newer) and Remote Viewlog 8.40 (or newer). Remember where you save them too.

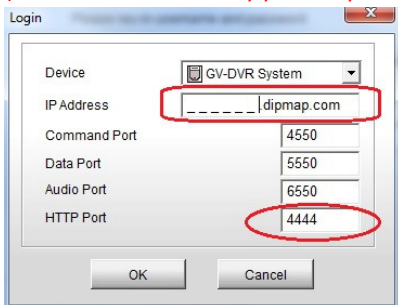
TCS-DVR Software Downloads



3. Once the files are saved, right click on the file and choose "Extract All" and a new folder containing the installation files will be created.
4. Open Multiview folder and doubleclick "DMMultiView.exe" file to install, follow the directions that come up and choose "next" until completed. Do the same with Remote Viewlog.
5. On your desktop, double click the "DMMultiView" icon.
6. When it loads up for the first time, Click on Edit in window that opens



7. In the IP address box enter: **YOURNAME.dipmap.com**
("Yourname" is chosen by you and your TCS installer)



8. Change HTTP Port to 4444 and press OK.
9. Enter your username and password, and check the save password box, and click ok.

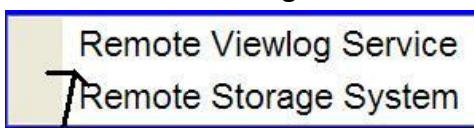
How to Install Remote Viewlog

1. Download Remote Viewlog from www.tcsecurity.com/service.htm, unzip and install it.
2. Click "Start" button, go to "All Programs" look for folder called Remote Viewlog.

3. Click "Remote Viewlog" in the list




4. Select Remote Viewlog Service



Select this one

5. Enter IP address "**YOURNAME**.dipmap.com" and your username and password and select "Save Password"

A screenshot of a dialog box titled 'Connect to Remote Viewlog Service'. It contains several input fields and checkboxes. The 'IP Address' field is empty. The 'Port' field contains '5552' and has a 'Default' button next to it. The 'ID' field contains 'Guest'. The 'Password' field is empty. There is a checkbox for 'Save Password' which is unchecked. The 'Host Type' dropdown menu is set to 'DVR'. There is a checkbox for 'Add current entry to Address book under this group' which is unchecked. Below this checkbox is a dropdown menu with 'New Group' selected. At the bottom of the dialog are three buttons: 'Address book', 'Connect', and 'Cancel'.

6. Click Connect

7. Use the Viewlog the same as on the DVR system, choosing camera Name, date and time.