

YourName: _____

How to Use the Web View Feature of the TCSDVR Camera System

Before you can view your cameras "Active X" must be enabled. Follow these steps to enable it:

The following steps will not affect the performance of your computer & you may restore them to your original settings after the Install.

- Set your Screen resolution to 1024x768 or higher and write down the settings. To do this, right click on your desktop, choose properties, settings, & drag the slider bar.
- Enable Active X in all places. To do this, Open up Internet Explorer and go to the following:
 1. TOOLS
 2. INTERNET OPTIONS
 3. SECURITY TAB
 4. Click CUSTOM LEVEL BUTTON, & Everywhere it SAYS ACTIVE X, check "Enabled"
 5. Click APPLY and OK

Live Camera Viewing

- 1) In your Internet Browser Address Bar type in your address <http://YourName.dipmap.com:81> (** NO www. ***)
- 2) For a first time user, enter your ID and Password, check "Remember MY ID" and click Login.



Webcam Login

ID:

Password:

Guest Login

Remember My ID and Password

[Change Password](#)

[Forget Password](#)

- 3) For viewing the live cameras, you will be asked to install all of the proper compression codec software. Answer "Yes" or "Install" to all questions.
- 4) If you choose to watch 1 or 2 cameras, choose "1 Windows or 2 Windows" and press the play button (The Triangle)



- 5) To watch more than 2 cameras, you must click "Multiview", then click the correct screen resolution. The software will download automatically, install it and choose yes to all questions. Make sure your display resolution is set to 1024X768 or higher before you load the program. **(**If your display resolution is set to 800X600, the program will not function correctly because there is not enough room on the screen for all of the cameras. To change your display resolution, right click on your main desktop and choose properties, then choose settings. Here you can change the Screen resolution to 1024X768 or higher. ***)** Enter your name & password when asked.

Recorded Video Viewing (Remote Playback of the Video Files)

- 6) In your Internet Browser Address Bar type in your address <http://YourName.dipmap.com:81> (** NO www. **) and Login.
- 7) Choose "Remote Playback", then click "Viewlog", then click your screen resolution. You will automatically be prompted to install the proper compression software. Choose yes and the program will retrieve everything for you. Answer "Yes" to any questions the computers asks.
- 8) Once the software has been installed you will be prompted to enter the info for your Cameras. Type in "YourName.dipmap.com", Port 5552 (By default) and enter in your ID and password.

Connect to Remote Viewlog S...

IP Address : name.ipupdate.com

Port : 5552 Default

ID :

Password :

Save Password

Add current entry to Address book under this group

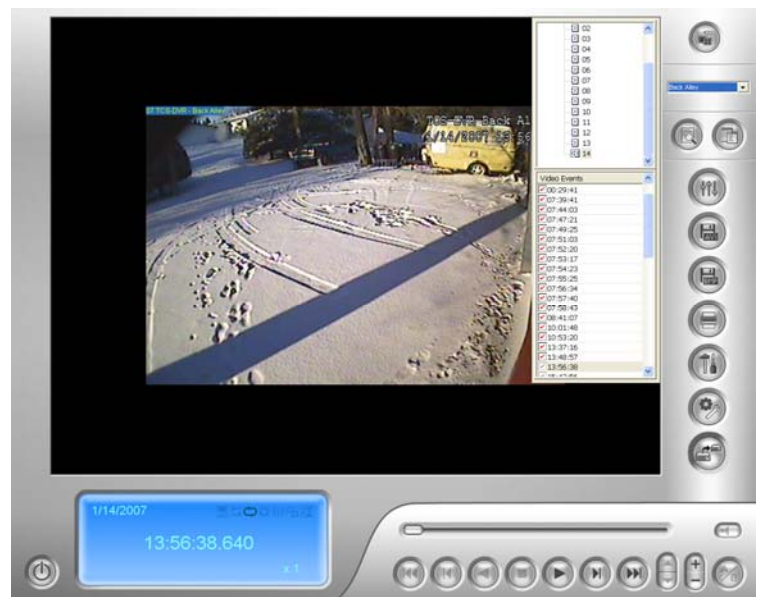
New Group

Address book Connect Cancel

- 9) Click Connect. Once connected, use it the same as you use the Regular Viewlog.



Multiview Live Viewer



Remote Viewlog