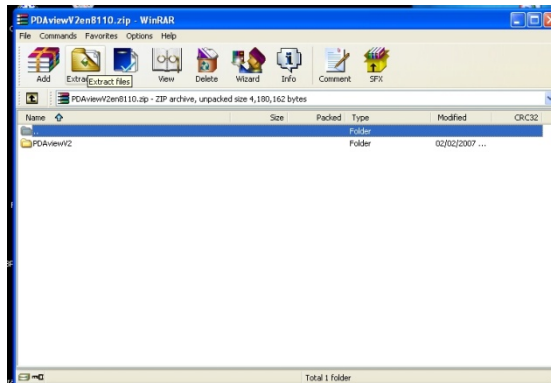
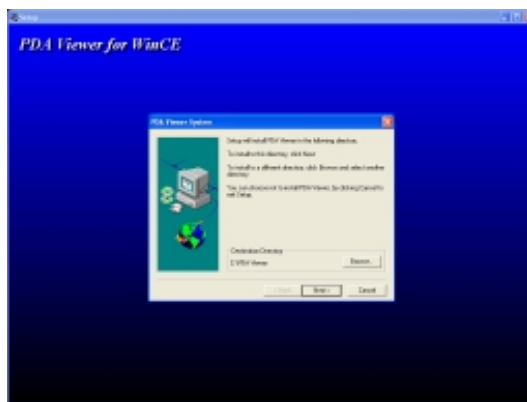


# TCSDVR Mobile Phone Software

dock pda with computer



extract file



run setup.exe

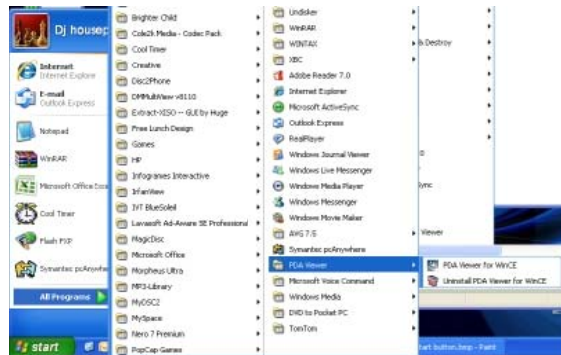
click next then next again.

when installed on computer,



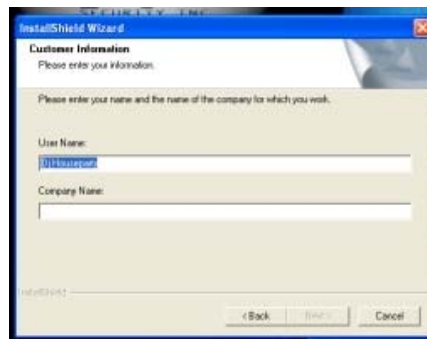
click "start"

all programs, pdaviewer



run pdaviewer for wince

click next then yes



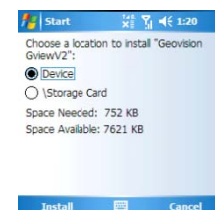
enter username and company name

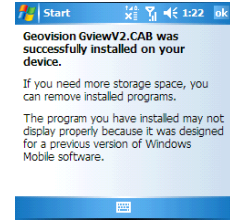
click typical installation then next

then next again.

activesync will connect with pda and install on device.

goto device and click where to install program, recommend on storage card.

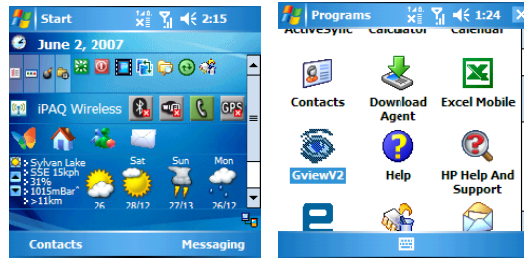




after program is installed on device click ok on device screen

program is installed

to run program



click on start ->programs->gviewv2

gview must connect to either wifi (if phone capable) or thru phone data.



GView V2

there are 2 buttons on the bottom of the screen



1. left button ... looks like an eye.



2. right button ... looks like piece of paper

first button 1

enter ip address format 192.168.0.1

or enter ddns address ie. "here.dipmap.com"

port set to 8866

enter your username and password

click ok

you are now connected

click here to choose camera to view

tap screen to go full screen

tap again to go back

bottom screen buttons

left arrow -> back to first menu

stop -> ends connection

next button -> brings menu up

hi,mid,low -> resolution of camera

arrow -> rotate screen , press again to return

next button -> page -> take screen shot of camera

cif-> higher quality signal

qcif -> lower quality signal less data usage.

red button -> record controls

left arrow -> main menu

red rec button -> start individual camera record

blue stop button -> stop individual camera record

next record button -> start all cameras record

last button with x -> stop all cameras record

main screen

last button -> camera state

to disconnect and end program either click stop and ok or ok and ok

Button 2

as with live view enter ip address

port 5511

username and password

mdb type dvr

click ok

4 button on bottom

play, stop, end program and screen capture

scroll to bottom of screen and select camera to playback

scroll back up click + beside rpb date

choose year

choose month

choose day

then choose time

**PRESS PLAY**

stop takes you back to time list

to exit press red x

to exit gview completely, at main screen press ok.

remember to check you data connection is disconnected.

